

Thomas Straub

2014 - 2016

(selected Works)



Installation view at Q18, Quatier am Hafen, Cologne/Köln
in cooperation with Jessica Twitchell

The Assembling White Smoke, 2016
painted pine wood, sandwich-type plaster boards,
fog machine;
4,30 x 4,30 x 2 m

Installation view at Q18, Quatier am Hafen, Cologne/Köln
in cooperation with Jessica Twitchell

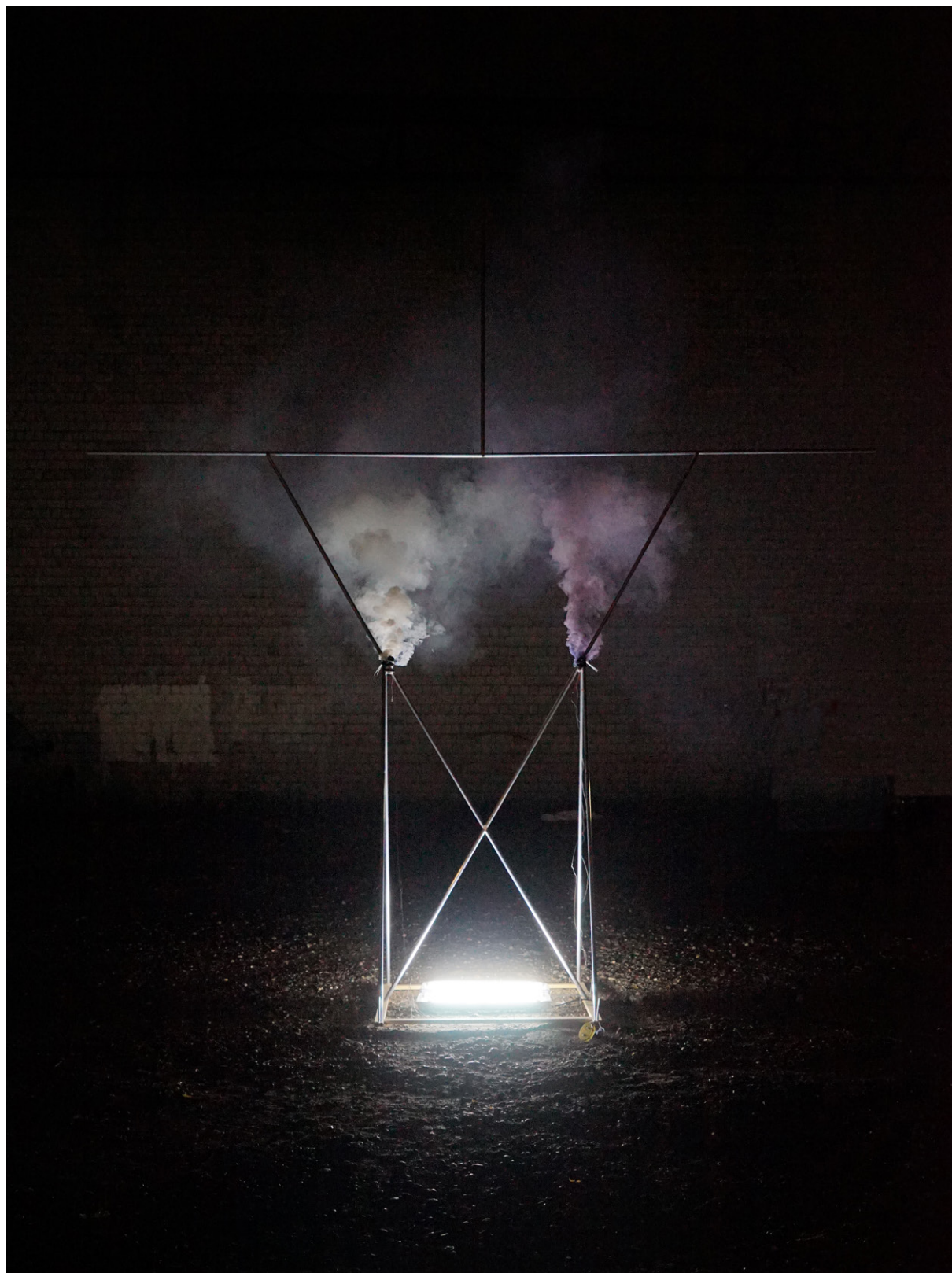
The Assembling White Smoke, 2016
detail substructure
painted pine wood, sandwich-type plaster boards,
fog machine;
4,30 x 4,30 x 2 m



Liege II, 2016
painted pine wood, sandwich-type plaster board;
200 x 60 x 17 cm

Grauer Koyote (Häs), 2016
pigmented silicon, recycling fabric, leather,
size variable





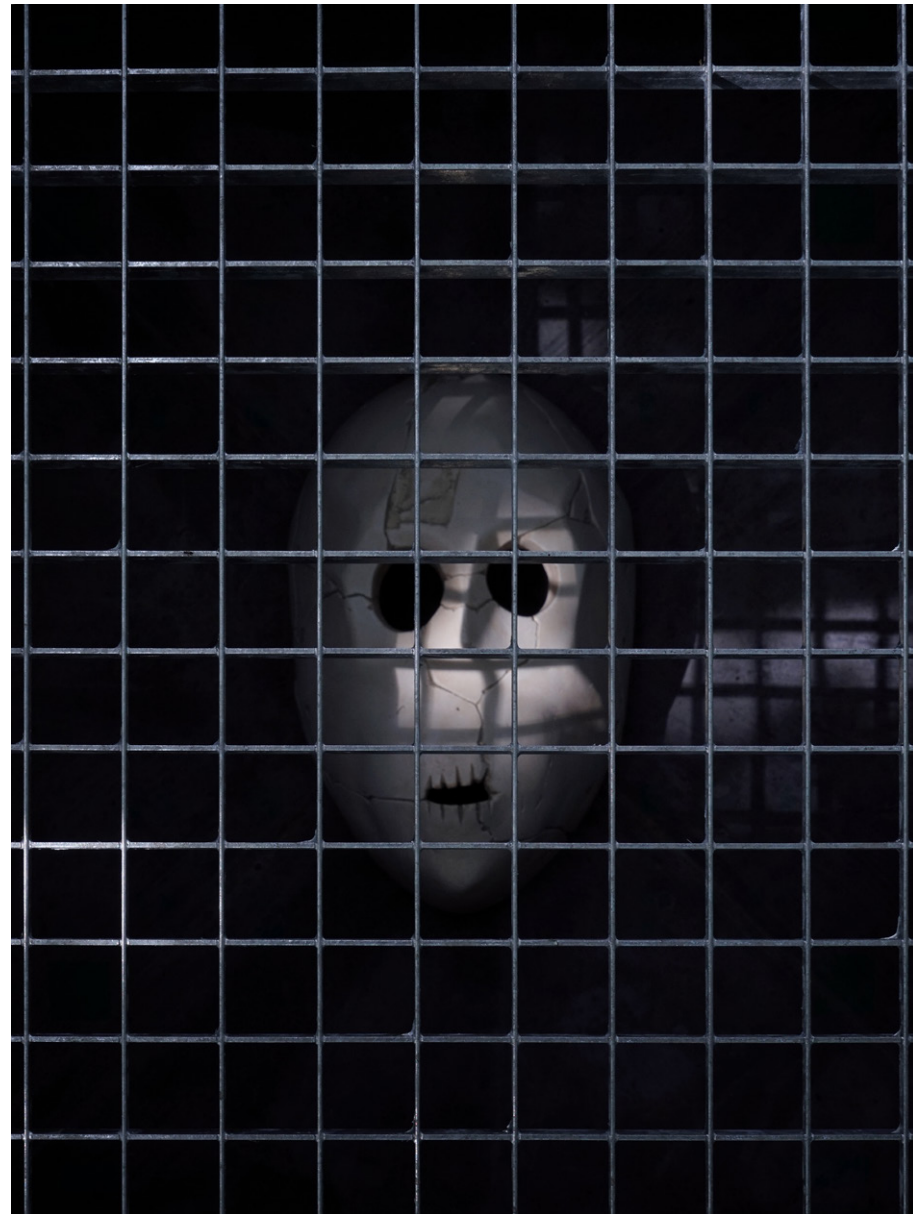
first installation for testing the artificial smoke,
constructed to built up on top of Kunstzelle, WUK, Vienna, AT

Wächter (The Sculptural Analysis of Myth), 2015
self constructed aluminium tube system, neon tubes,
electr. components and artificial smoke;
3,75 x 3,60 x 2,10 m

Installation view in the brush at Gustavs Park, Zeche Carl, Essen

The Chamber, 2015
black bricks masoned on loose gravel fundament, steel Grid,
black concrete and white concrete;
154 x 154 x 56 cm





Installation view in the brush at Gustavs Park, Zeche Carl, Essen

The Chamber (Detail), 2015
 a replica of a 9000 year old stone mask found in Nahal Hemar, Israel;
 steel Grid, white concrete cast, black concrete base;
 29 x 18 x 12 cm



...the state in summer 2016 after despoliation by unknown



Installation view of the exhibition *The Inner Half Hermitage*
at Simultanhalle, Cologne

Eremitage, 2014
self constructed aluminium telescopic tubes and swivel coupler;
3,80 x 5,60 x 2,10 m





Installation view of the exhibition *The Inner Half Hermitage*
at Simultanhalle, Cologne

Provisorische Wand, 2014
wood skeleton wedged into the architecture, found cardboards, tape;
9,20 x 5,70 x 0,10 m

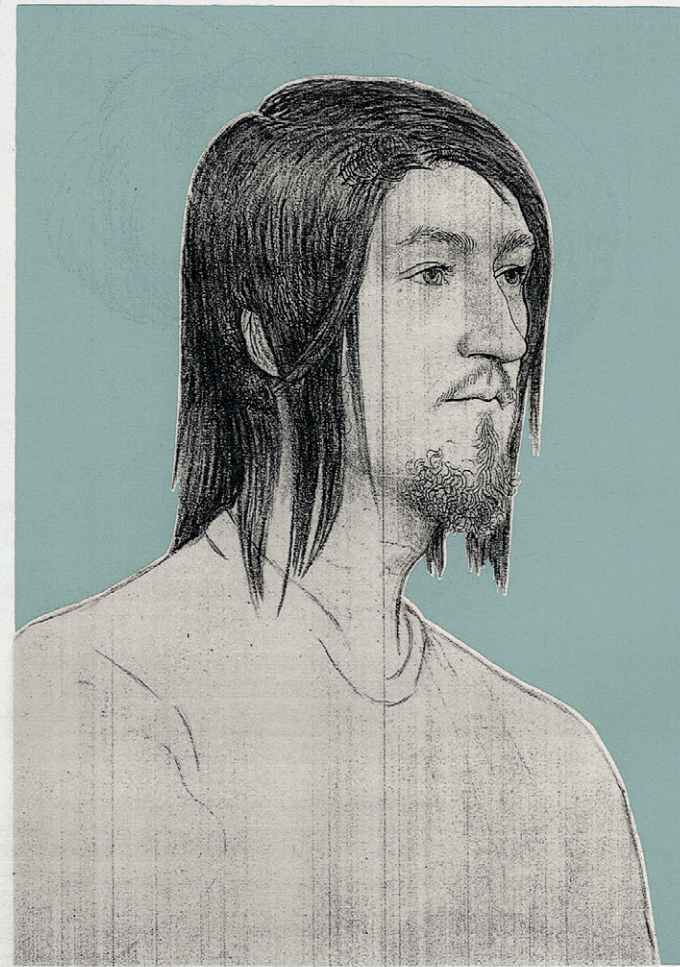


Installation view of the exhibition *hagulane* on the rooftop
at Städtische Galerie Villingen-Schwenningen, South Germany

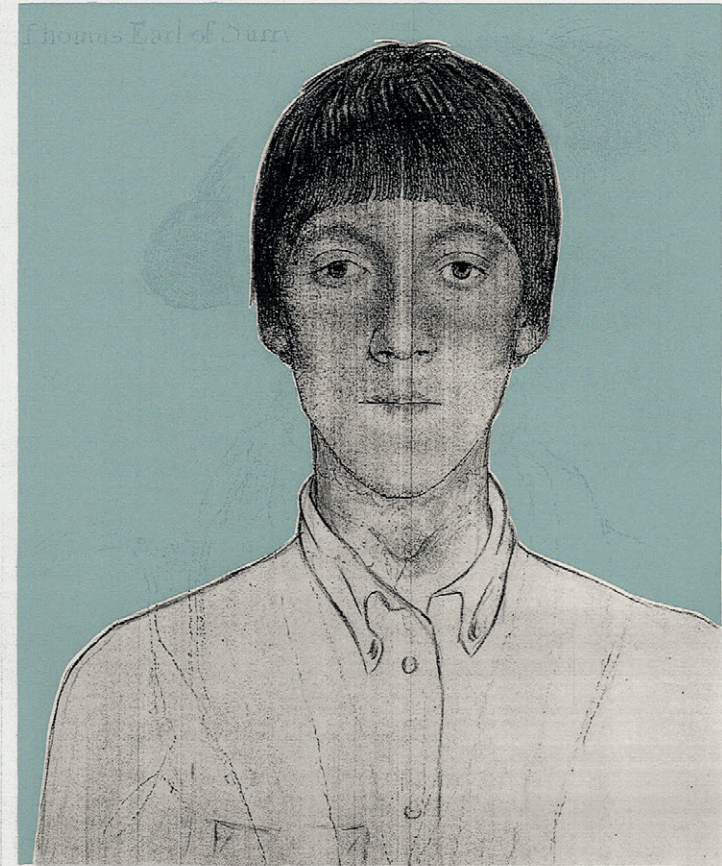
Parallel Moonrise (Vier Beleuchtungsstative), 2014
self constructed aluminium telescope tripods,
aluminium, plastic, neon tubes, electr. components, sandbags;
215 x 370 x 300 cm

Aureole (Fragment), 2014
wood covered with beaten gold on Polimentground, aluminium;
115 x 220 x 30 cm





XXXIII



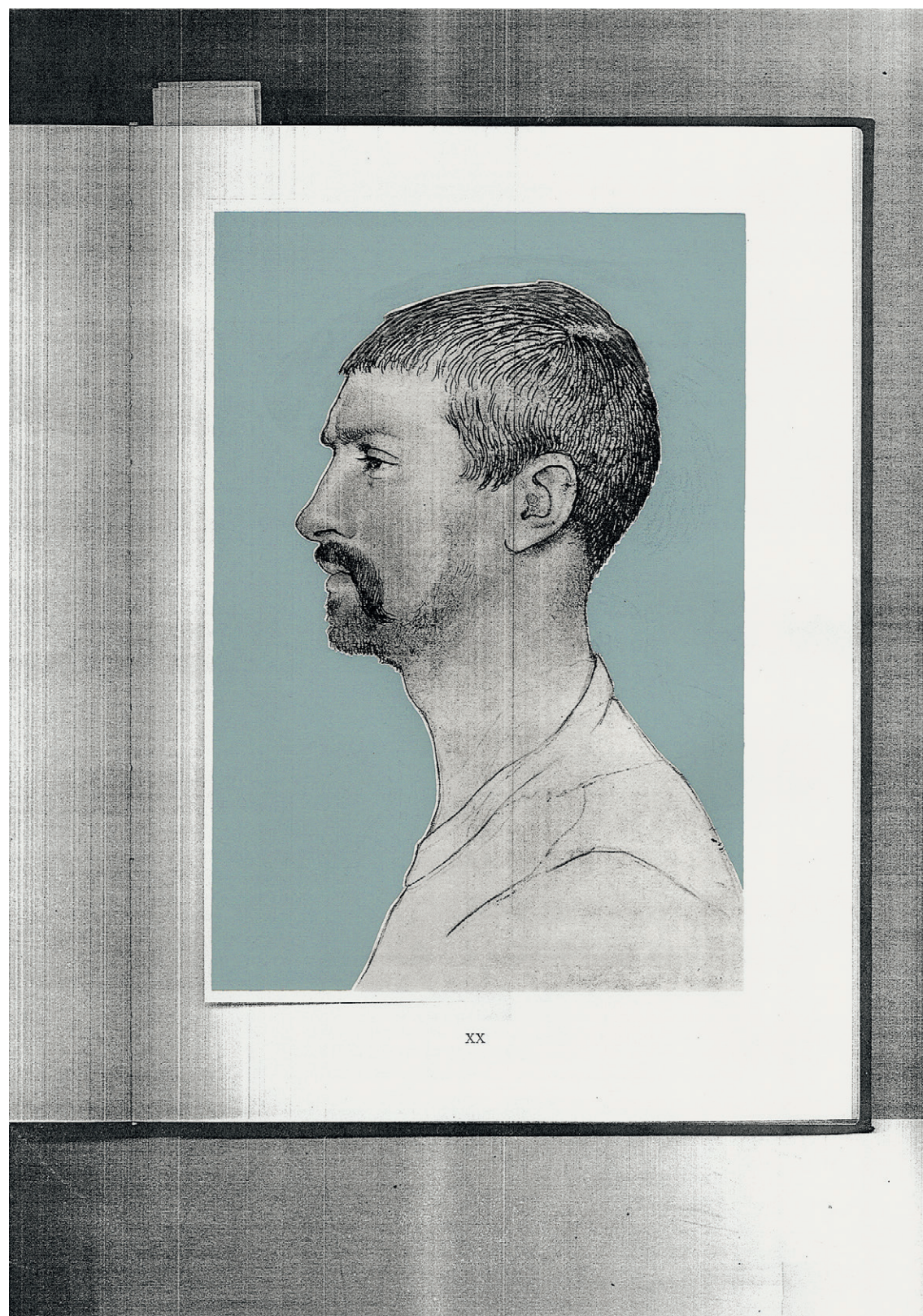
XIX



XXIX



XXX



untitled (Holbeingruppe), 2014
five sheets, Edition 100

after five drawings of Hans Holbein around 1530 A.D.;
collage with opaque white and charcoal on A3 photocopy,
screenprint with Jade powder and transparent lacquer on paper;
each 42 x 29,7 cm